

Inspire magazine

Your local hospice charity's supporter newsletter | Summer 2020



Woking & Sam Beare
Hospice & Wellbeing Care

“**Thank you to our
fabulous community**”

As we continue to work alongside our NHS colleagues we are grateful for all the acts of kindness and support during the COVID-19 pandemic.

Inspire Magazine

This is a special issue of Woking & Sam Beare Hospice's supporter newsletter to share with you a snapshot of the support we have had during the COVID-19 pandemic and as an opportunity for us to say a heartfelt thank you.

During these difficult times we have continued to work alongside our NHS colleagues as an important part of the healthcare system, caring for some of the community's most vulnerable patients.

Like many organisations we have been impacted by the pandemic. Our Retail Division has been closed since the end of March and all of our fundraising events have been cancelled or postponed. As a charity this has been a real challenge for us but we are very aware of the impact these unprecedented times are having on us all. Which is all the more reason for why we are so grateful for all the acts of kindness, the donations and the creative and innovative ways that supporters like you have fundraised on our behalf.

A moment in time ...

Cheryl Catton's Doorstep Photography



Local photographer Cheryl Catton has been supporting Woking & Sam Beare Hospice in a unique way with her "Project Doorstep" photo shoots, photographing local families on the doorsteps of their homes to capture 'Lock Down Moments in History' in exchange for donations to the Hospice. Pictured here is the Hospice's very own 'Doorstep Moment in Time'.

www.cherylcattontphotography.co.uk

Local businesses and communities working together

There have been too many examples of communities coming together to mention in this magazine. However, here we mention just a few lovely examples of local businesses and individuals coming together in support of their community and in aid of the Hospice.

The Garibaldi Pub in Knaphill has been cooking and delivering hot food to the residents of Knaphill, Bisley, Brookwood and St John's in exchange for a donation to the Hospice and then matching those donations.

Boz's Fruit & Veg and Prince & Sons' Butchers in Horsell have continued to collect donations on behalf of the Hospice as they work to

provide essential supplies throughout the pandemic. Additionally, over a number of weekends they clubbed together with Thurston's Brewery in Horsell to give away its newly created [and clever play on words] 'Sam's Beare' in exchange for donations with the session ale being bottled in containers supplied by West Horsley Dairy.

Seymours in Horsell hosted a clothing pop up shop sale on our behalf.

And the Sam Beare Community in Weybridge who took part in our Clinical Nurse Specialist Rachel's 'Elmgrove Road Lockdown Online Pub Quiz' in order to raise money for the Hospice.

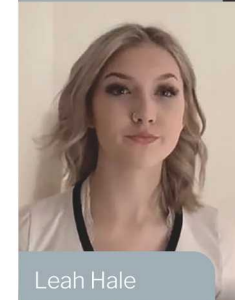


#Sing 4Heroes

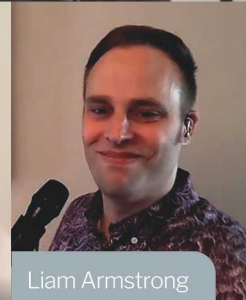
Following the nation's clap for Key Workers on a Thursday night we hosted our own Facebook Sing 4 Heroes in recognition of all frontline workers during these unprecedented times. With thanks to our superstar singers:



Nolan Dark



Leah Hale



Liam Armstrong



Graham Broad



Livvy Beer

Gifts and equipment for our staff

Again there are too many to be able to list here but all the treats, drawings, notes of support, donations of equipment, supplies and PPE donations and much more have meant a great deal to our key worker staff who have continued to work throughout the pandemic.

A special thanks to the Rotary Club of Woking District for funding lunch and refreshments for our staff over the last few months and to the Ahmadiyya Muslim Community for the delicious hot meals. And thank you to all our staff and volunteers for continuing to work in these challenging times - you deserve the treats!



Please see our thank you acknowledgement webpage for more details: www.sbhospices.co.uk/COVIDThanks



Retail Phased Reopening

Our Warehouse, Knaphill Furniture Shop and a handful of our other shops are reopening to the public as of the beginning of July. There will then be a phased reopening over a 2-3 month period of the rest of our shops, as they are assessed safe around social distancing and other Government guidelines. The safety of our staff, volunteers and our customers is paramount.

We are very grateful to all of you who have kept your items ready to donate to us

when we are able to reopen. Due to quarantine rules and while only a small number of our shops will be open we will only be able to accept donations at our Warehouse for a few hours a couple of days per week. Please check our website for opening hours and further information.

Our Warehouse may be subject to closure if the storage space becomes too full. This is to ensure we are not in breach of Health & Safety Regulations and is not a reflection on the value

of your goods. We have no wish to cause offence and we apologise in advance for any inconvenience this may cause. Please bear with us as we work to get back to some sense of "normal".

For more information on our shops, which ones are open and how best to make donations please visit: wsbhospices.co.uk/shops

A shout out to our young supporters

We have been humbled and truly grateful by every act of kindness during these difficult times. The thoughtful contributions of our youngsters is a testament to the good character of our community.

To mention just a few: Jean for her fabulous drawings for our staff; Libby for donating her cancelled dance lesson fee; Ben for making rainbow bracelets in exchange for donations; Ollie's VE Day cream tea deliveries in exchange

for donations; Patrick, Will, Philippa, Lauren and Harriet for their cake sale; and Connor's marathon walk fundraiser. To them and all of those who have sent in drawings and taken part in challenges and other fundraisers - thank you.



Join our Lottery online

A simple and easy way to be in with a weekly chance of winning **£1,000** while supporting your local charitable hospice all from the comfort of your own home.



To keep up to date with all our news follow us on:



Woking & Sam Beare Hospice and Wellbeing Care

E: info@wsbhospices.co.uk

T: 01483 881750

www.wsbhospices.co.uk

Registered Charity No. 1082798/1115439